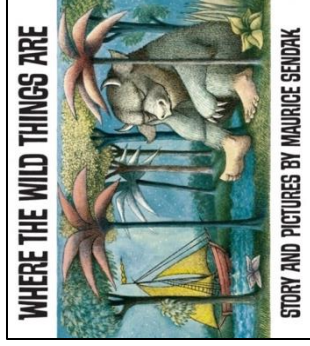


Year 1 English Knowledge Organiser - Summer 2

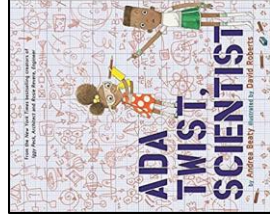


Core Texts



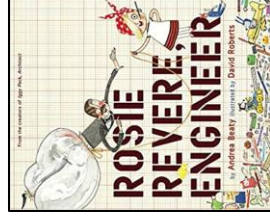
Where the Wild Things Are

Maurice Sendak



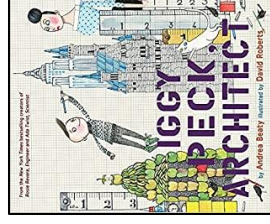
Ada Twist, Scientist

Andrea Beaty



Rosie Revere, Engineer

Andrea Beaty



Iggy Peck, Architect

Andrea Beaty



Meesha Makes Friends

Tom Percival

Features of Text Type: Picture Books

Picture books contain characters that pupils will identify with. For example, all pupils will have experienced feeling anger and will therefore relate with Max.

Features of Text Type: Fact Files

Headings and **subheadings** are used to structure writing. Often, subheadings are written as questions.

A **glossary** (found at the back of the text) explains any unfamiliar or technical vocabulary to the reader, with words listed in alphabetical order.

Bullet point lists are sometimes used to emphasise key points in a clear manner.

Features of Text Type: Instructions

Instructions have specific layout and content features and are a type of informative writing that tells the reader how and when to do something.



Year 1 Maths Knowledge Organiser - Summer 2



Key Vocabulary



add
plus



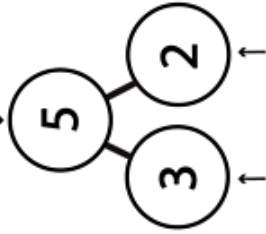
subtract
minus



equals

Part Whole

the whole



a part

Counting to 100

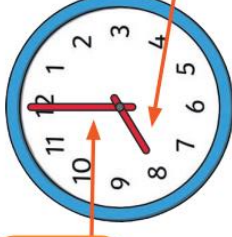
1	2	3	4	5	6	7	8	9	10
11	12	13	14	15	16	17	18	19	20
21	22	23	24	25	26	27	28	29	30
31	32	33	34	35	36	37	38	39	40
41	42	43	44	45	46	47	48	49	50
51	52	53	54	55	56	57	58	59	60
61	62	63	64	65	66	67	68	69	70
71	72	73	74	75	76	77	78	79	80
81	82	83	84	85	86	87	88	89	90
91	92	93	94	95	96	97	98	99	100



One more than 92 is 93. One less than 100 is 99.

Telling the time

The long hand is the minute hand.



The short hand is the hour hand.

Months of the Year

1 st	January
2 nd	February
3 rd	March
4 th	April
5 th	May
6 th	June
7 th	July
8 th	August
9 th	September
10 th	October
11 th	November
12 th	December

Days of the Week

Monday
Tuesday
Wednesday
Thursday
Friday
Saturday
Sunday

One pence



Two pence



Five pence



Ten pence



Twenty pence



Fifty pence



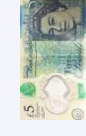
One pound



Two pounds



Five pounds



Ten pounds



1p

2p

5p

10p

20p

50p

£1

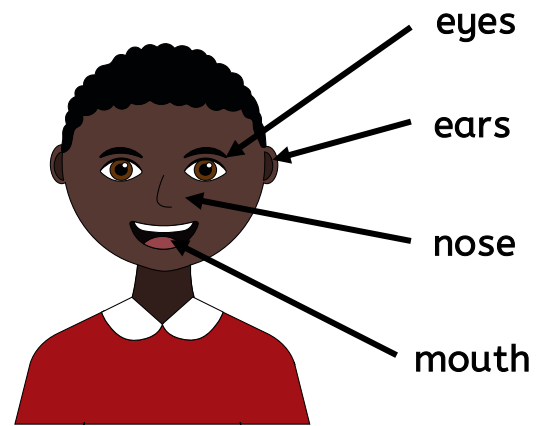
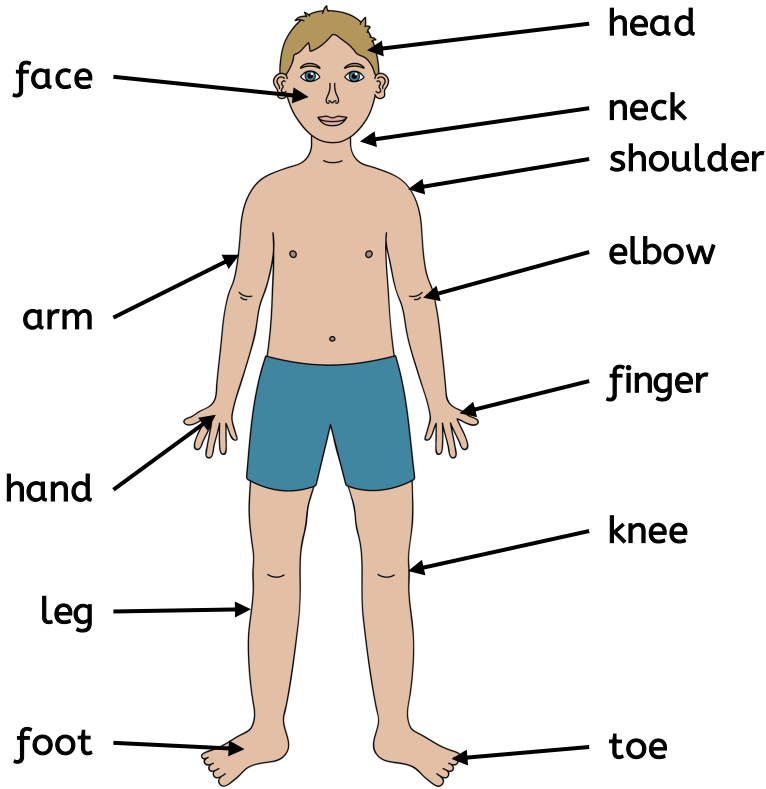
£2

£5

£10

Humans

Parts of the Human Body



What do humans eat?

- Humans are **omnivores**, which means they can eat plants and animals.
- Some humans choose to eat only plants.

The Five Senses

Humans have five **senses**: smell, taste, touch, sight and hearing.

We see with our eyes.

We smell with our nose.

We taste with our tongue.



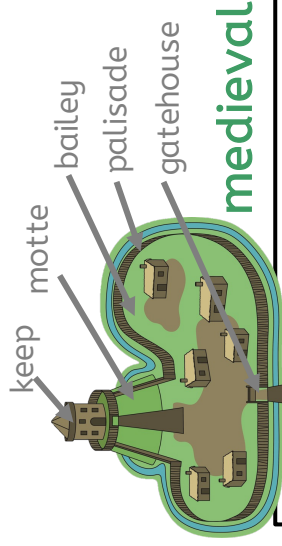
We hear with our ears.

We sense touch with our skin.



Homes through time

In **prehistoric**, **medieval** and **Tudor** times, people went to the toilet in pots and then took it outside. There was no running water. Fires were very important to keep people warm.

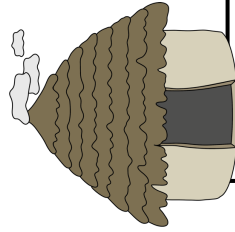
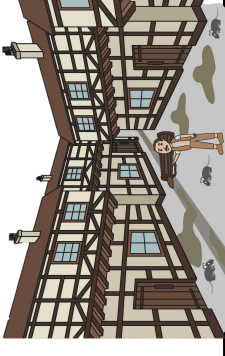


medieval

- Motte-and-bailey castles were built to keep people safe.
- They were built from wood and **wattle and daub**.

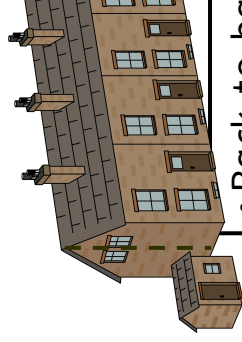
Tudor

- In Tudor houses, the upper floors stuck out. This is called **jettied** and gave more space.
- They were built from wood and **wattle and daub**.



prehistoric

- Prehistoric roundhouses were made of wood and wattle and daub.



Victorian

- Back-to-back houses were built of brick and glass.
- Shared toilets were outside, fires were important, and there was running water.

Present

Living memory

